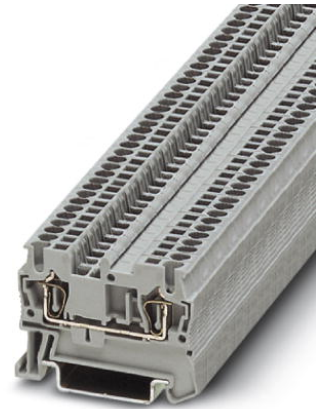


## ST 1,5 OG

Order No.: 3037012

The illustration shows version ST 1,5 in gray

<http://eshop.phoenixcontact.de/phoenix/treeViewClick.do?UID=3037012>Feed-through terminal blocks with spring-cage connection, cross  
section: 0.14 - 1.5 mm<sup>2</sup>, width: 4.2 mm, color: orange

Commercial data	
EAN	4017918599454
Pack	50 Pcs.
Customs tariff	85369010
Weight/Piece	0.005016 KG
Catalog page information	Page 56 (CL-2007)

**Product notes**WEEE/RoHS-compliant since:  
01/01/2003

<http://www.download.phoenixcontact.com>  
Please note that the data given here has been taken from the online catalog. For comprehensive information and data, please refer to the user documentation. The General Terms and Conditions of Use apply to Internet downloads.

**Technical data****General**

Number of levels	1
Number of connections	2
Color	orange

Insulating material	PA
Inflammability class acc. to UL 94	V0

**Dimensions**

Width	4.2 mm
Length	48.5 mm
Height NS 35/7,5	36.5 mm
Height NS 35/15	44 mm

**Technical data**

Maximum load current	17.5 A (with 1.5 mm <sup>2</sup> conductor cross section)
Rated surge voltage	6 kV
Pollution degree	3
Surge voltage category	III
Insulating material group	I
Connection in acc. with standard	IEC 60947-7-1
Nominal current I <sub>N</sub>	17.5 A
Nominal voltage U <sub>N</sub>	500 V
Open side panel	ja

**Connection data**

Conductor cross section solid min.	0.08 mm <sup>2</sup>
Conductor cross section solid max.	1.5 mm <sup>2</sup>
Conductor cross section stranded min.	0.08 mm <sup>2</sup>
Conductor cross section stranded max.	1.5 mm <sup>2</sup>
Conductor cross section AWG/kcmil min.	28
Conductor cross section AWG/kcmil max	16
Conductor cross section stranded, with ferrule without plastic sleeve min.	0.25 mm <sup>2</sup>
Conductor cross section stranded, with ferrule without plastic sleeve max.	1.5 mm <sup>2</sup>
Conductor cross section stranded, with ferrule with plastic sleeve min.	0.25 mm <sup>2</sup>
Conductor cross section stranded, with ferrule with plastic sleeve max.	1.5 mm <sup>2</sup>
2 conductors with same cross section, stranded, TWIN ferrules with plastic sleeve, max.	0.5 mm <sup>2</sup>
Type of connection	Spring-cage connection

Stripping length	10 mm
Internal cylindrical gage	A1

**Certificates / Approvals**

Approval logo



**CSA**

Nominal voltage $U_N$	300 V
Nominal current $I_N$	15 A
AWG/kcmil	26-14

**CUL**

Nominal voltage $U_N$	300 V
Nominal current $I_N$	15 A
AWG/kcmil	26-14

**UL**

Nominal voltage $U_N$	300 V
Nominal current $I_N$	15 A
AWG/kcmil	26-14
Certification	BV, CB, CSA, CUL, DNV, GL, GOST, LR, NK, UL, VDE-PZI

**requested approbations**

Certification Ex:	IECEX, KEMA-EX
-------------------	----------------

**Accessories**

Item	Designation	Description
<b>Assembly</b>		
3030721	ATP-ST 4	Partition plate, for visual and electrical separation of terminal groups, width: 2 mm, color: gray
3030417	D-ST 2,5	Cover, width: 2.2 mm, length: 48.5 mm, color: Gray

**Bridges**

3030116	FBS 2-4	Plug-in bridge for cross-connections in the terminal center, 2-pos., color: Red
3030129	FBS 3-4	Plug-in bridge for cross-connections in the terminal center, 3-pos., color: Red
3030132	FBS 4-4	Plug-in bridge for cross-connections in the terminal center, 4-pos., color: Red
3030145	FBS 5-4	Plug-in bridge for cross-connections in the terminal center, 5-pos., color: Red
3030158	FBS 10-4	Plug-in bridge for cross-connections in the terminal center, 10-pos., color: Red
3030352	FBS 20-4	Plug-in bridge for cross-connections in the terminal center, 20-pos., color: Red

**Marking**

3030958	WST 1,5	Warning cover, 5-pos., for terminal width: 4.2 mm
---------	---------	---

**Plug/Adapter**

3206131	ISH 1,5/0,2	Insulation stop sleeve, color: White
3031034	ISH 1,5/0,5	Insulation stop sleeve, color: gray
3030925	PAI-4	Test adapter, for 4 mm diameter test plug PS and safety test plug, makes contact in the bridge shaft
3030970	PS-4	Modular test plug, for individual assembly of test plug strips, for ST 1,5...terminal blocks, can be labeled with ZBF 4, color: red

**Tools**

1204504	SZF 0-0,4X2,5	Screwdriver, blade: 0.4 x 2.5 x 100 mm, length 180 mm
---------	---------------	---